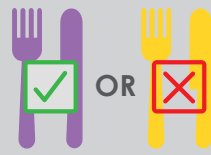


Understanding Erivedge®: Recommendations for patients during treatment for advanced basal cell carcinoma



Erivedge® is a **standard-of-care** treatment in advanced basal cell carcinoma (BCC) that is inappropriate for surgery or radiotherapy¹

It targets and inhibits a component of the **hedgehog pathway**, which is abnormally activated in patients with BCC¹⁻³



Erivedge is conveniently administered as a **once-daily** 150 mg capsule **with or without food**⁴

- No dose adjustment is required** for elderly patients, or those with hepatic or renal disease⁴
- Capsules must be swallowed **whole**, and not be crushed nor opened⁴
- If a dose is missed, patients should resume with the **next scheduled dose**⁴



Erivedge® has a well-established safety profile based on clinical studies and **>5 years of clinical practice**^{3,5,6}

The most common adverse reactions to **Erivedge® are mild to moderate**^{3,5}

Adverse reactions can be managed by up to **4 weeks** of treatment **interruptions**, without compromising efficacy^{6,7}

STRATEGIES FOR MANAGING COMMON SIDE EFFECTS^{4,7}

ALOPECIA

Occurs in **66%** of patients

- ✓ Manage expectations
- ✓ Identify comorbidities that might contribute to alopecia
- ✓ Consider using minoxidil
- ✓ Suggest camouflaging (scarves, hats, wigs)

ASTHAENIA

Occurs in **47%** of patients

- Grade 0:**
- ✓ Enquire on general, physical and mental fatigue as well as reduced activity and/or motivation
- Grade 1–2:**
- ✓ Recommend gentle physical activities such as yoga, physical-based therapies and psychosocial interventions
 - ✓ Assess anaemia
 - ✓ If present, depression might require use of psychostimulants
- Grade ≥3:**
- ✓ Consider recommendations for Grades 1–2 **AND** 2–4 weeks treatment interruption

MUSCLE SPASM

Occurs in **75%** of patients

- Grade 1–2:**
- ✓ Check hydration
 - ✓ Recommend gentle physical activity
 - ✓ Suggest stretching or massaging
 - ✓ Suggest using heating pads or ice packs
 - ✓ Consider pharmacological therapy
- Grade ≥3:**
- ✓ Consider 2–4 weeks treatment interruption or discontinuation

DYSGEUSIA AGEUSIA

Occurs in **59%** of patients

- ✓ Suggest changing recipes, using spices, marinating, eating cold food (to lessen metallic taste)
- ✓ Provide access to a nutritionist/dietician

NAUSEA

Occurs in **35%** of patients

- ✓ Suggest taking Erivedge® at night or with food
- ✓ Consider anti-nausea medications
- ✓ In presence of emesis, atypical antipsychotic olanzapine, lorazepam, cannabinoids, phenothiazines and steroids can be added to regimen
- ✓ Consider 2–4 weeks of treatment interruption or discontinuation as last option

DIARRHOEA

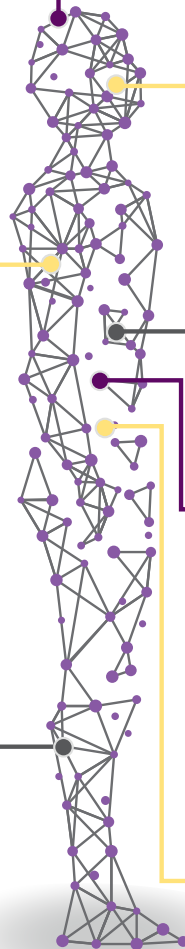
Occurs in **30%** of patients

- Grade 1–2:**
- ✓ Recommend staying hydrated
 - ✓ Suggest avoiding foods that make diarrhoea worse (raw fruits and vegetables, coffee, fried food, beans, cabbage)
- Grade ≥3:**
- ✓ Consider pharmacological treatment or treatment interruption

WEIGHT LOSS

Occurs in **50%** of patients

- ✓ Recommend eating 6–8 small high-calorie foods/day
- ✓ Consider using supplements
- ✓ Consider consulting a nutritionist (in 5–10% of weight-loss cases)



References

1. Peris K et al. *Eur J Cancer* 2019;118:10–34; 2. Bichakjian C et al. *J Am Acad Dermatol* 2018;78:540–559; 3. Sekulic A et al. *New Engl J Med* 2012;366:2171–2179; 4. SMPC. Erivedge 150 mg hard capsules – Summary of Product Characteristics. Available at: <https://www.ema.europa.eu/en/medicines/human/EPAR/erivedge>; 5. Basset-Séguin N et al. *Eur J Cancer* 2017;86:334–348; 6. Fife K et al. *Future Oncol* 2017;13:175–184; 7. Lacouture M et al. *Oncologist* 2016;21:1218–1229.



The Erivedge® Pregnancy Prevention Programme provides important information about pregnancy, prevention, contraception and teratogenicity

For general information, product complaint, and reporting any suspected adverse reactions, please visit: <https://medinfo.roche.com/>



Erivedge is indicated for the treatment of adult patients with symptomatic metastatic basal cell carcinoma or locally advanced basal cell carcinoma inappropriate for surgery or radiotherapy (see sections 4.4 "Special warnings and precautions for use" and 5.1 "Pharmacodynamic properties" of the Erivedge Summary of Product Characteristics*).

*Reference: https://www.ema.europa.eu/en/documents/product-information/erivedge-epar-product-information_en.pdf